

- Ultra-Web® fine fiber media ensures longer filter life at a significantly lower pressure drop
- Superior particle release due to surface filtration
- Fluted media construction prevents bridging in fibrous or agglomerative applications
- Smaller and lightweight filter pack design with built-in handles
- Easy filter changeout for quicker maintenance — no tools required
- MERV* 13 filtration efficiency rating (standard)
- MERV* 15 filtration efficiency rating (optional)



PowerCore®
A Donaldson Filtration Technology



PowerCore® CP Filter Pack

(Also available in Standard, Spunbond and Anti-Static)

PROVEN TECHNOLOGY THAT PERFORMS

Proven and proprietary Ultra-Web® filter media delivers longer filter life, cleaner air and greater cost savings than other traditional filter media. It is made with an electrospinning process that produces a very fine, continuous, resilient fiber of 0.2-0.3 microns in diameter.

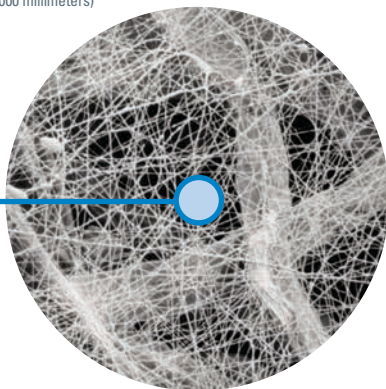
PowerCore filter packs with Ultra-Web media keep dust on the surface of the fluted channels where it is easily cleaned off unlike conventional filter bag material that depth loads, like 16 oz. (453.6 g) polyester.

- Surface loading promotes filter cleaning and longer life
- Better pulse cleaning lowers operational pressure drop and energy use

SEM† IMAGES

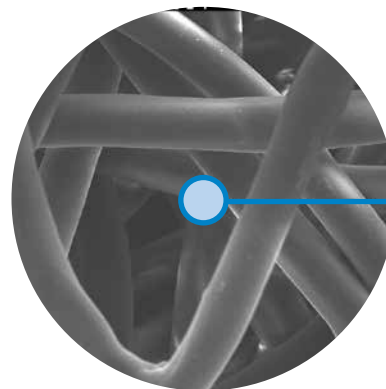
1 micron = 1/25,400 of an inch (1/1,000 millimeters)

10 micron



Ultra-Web Fine Fiber Technology (600x)

10 micron



16 oz. Polyester (600x)

† Scanning Electron Microscope.

* Refer to Technical Information on page 2.

APPLICATIONS

- Premium performance on fine, dry, fibrous and/or abrasive dust
- Longer life in aggressive/challenging applications
- Optional Spunbond or Conductive FR media available
- Spunbond version has excellent moisture and chemical resistance

SPECIFICATIONS

MEDIA COMPOSITION	
Fine Fiber Technology	Durable proprietary synthetic filter media fiber and polymer Mean fiber diameter of 0.2 µm
Substrates	<ul style="list-style-type: none"> • Proprietary blend of cellulose fibers • Spunbond Polyester • Conductive FR version per ESD STM 11.11-2001 Resistance less than 10⁶ OHM

MEDIA COMPATIBILITY DATA		
Temperature Resistance	150°F 65°C	
Moisture Absorption**	Maximum 14% @ 70°F (21°C) and 65% RH	
Chemical Tolerance***	Acids: Poor Bases: Fair	Oxidants: Poor Solvents: Fair
Abrasion Resistance	Excellent per TAPPI 476 (Taber Method)	
Moisture Absorption** for Spunbond	0.2–0.5% @ 70°F (21°C) and 65% RH	
Chemical Tolerance*** for Spunbond	Acids: Good Bases: Good	Oxidants: Good Solvents: Good

MEDIA EFFICIENCY	
U.S. Efficiency Rating	MERV* 13 (standard)
U.S. Efficiency Rating	MERV* 15 (optional)

FILTER PACK CONSTRUCTION	
Standard Construction	Obround design Fluted media configuration Urethane gasket Built-in handle

CURRENT AVAILABLE CONFIGURATIONS

Collector Models	Dimensions		PowerCore			
	in	mm	Standard	Spunbond	Conductive	Flame Retardant
CPC	22.3 x 7.5 x 7.0	566.42 x 190.50 x 177.80	•	•	•	•
CPV	22.3 x 7.5 x 7.0	566.42 x 190.50 x 177.80	•	•	•	•

* The Minimum Efficiency Reporting Value (MERV) of this filter cartridge has been determined through independent laboratory testing using ASHRAE 52.2 (2007) test standards. The MERV rating was determined at a face velocity of 118 feet per minute (36.0 meters per minute) and loading up to four inches (101.6 millimeters) water gauge. Actual efficiency of any filter cartridge will vary according to the specific application parameters. Dust concentration, airflow, particle characteristics, and pulse cleaning methods all affect filtration efficiency.
 ** Environmental conditions involving combinations of high temperature, corrosive material, and moisture can reduce media strength. Reduction in media strength may compromise cartridge integrity and performance.
 *** A combination of chemicals may alter fiber resistance to the specified performance level. Chemical attack may compromise cartridge integrity and performance.

Significantly improve the performance of your collector with genuine Donaldson Torit replacement filters and parts.

Important Notice

Many factors beyond the control of Donaldson can affect the use and performance of Donaldson products in a particular application, including the conditions under which the product is used. Since these factors are uniquely within the user's knowledge and control, it is essential the user evaluate the products to determine whether the product is fit for the particular purpose and suitable for the user's application. All products, product specifications, availability and data are subject to change without notice, and may vary by region or country.



Craig Equipment Company

13055 MIDDLETOWN INDUSTRIAL BLVD. LOUISVILLE, KY 40223 • P.O. BOX 43250 LOUISVILLE, KY 40253

TF: 800-928-7100 • T: 502-245-4840 • F: 502-245-1665

craig-equip.com