

DURA-LIFE™ – A BREAKTHROUGH FOR BAG USERS.

Polyester bag media has historically been produced with a needling process that creates large pores where dust can embed into the fabric, inhibiting cleaning and reducing bag life. Dura-Life™ bag media is engineered with a unique hydroentanglement process that uses water to blend the fibers, resulting in:

- More uniform material with smaller pore size
- Better surface loading of dust that prevents penetration deep into the media
- Improved pulse cleaning and lower operating pressure drop
- Bags with longer life and greater value

GET CLEANER AIR

- Proprietary Dura-Life™ polyester filter media engineered with a unique hydroentanglement process provides the best combination of filtration efficiency, airflow, and durability

PREMIUM PERFORMANCE

- Dissipates static charge build up
- Oleophobic treatment allows for superior dust cake release with wet, oily, or sticky dust applications
- Heat-seam construction results in a seam with increased dependability and efficiency
- Available in a wide variety of top and bottom configurations and lengths
- Options include abrasion cuffs and expansion rings



LONGER FILTER LIFE

- Two to three times longer bag life than conventional polyester when changing bags due to pressure drop
- Better surface loading of dust to prevent penetration deep into media

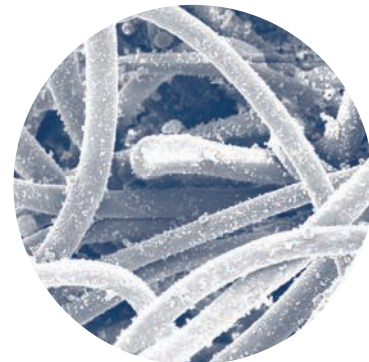
APPLICATIONS

- For applications where a static electrical discharge is a hazard, or where charged dust particles will not release from a non-conductive filter media
- Provides excellent dust cake release for wet, oily or sticky dust applications

Available as replacement for many popular brands of baghouse collectors.



Dura-Life™ Bag-Clean Air Side (300x)



Polyester Bag-Clean Air Side (300x)

MEDIA SPECIFICATIONS

Bag Technology	Proprietary hydroentangled polyester felt
Substrate	Dura-Life™ polyester with anti-static fibers and oleophobic treatment
Fabric Weight	10.5 oz/yd ² (355.9 g/m ²)
Thickness	0.058-0.068 inches (1.5-1.7 mm)
Air Permeability (cfm @ 0.5 "wg)	43-51
Electrical Resistivity (ASTM IST 40.1)	<1 x 10 ³ ohms/square

MEDIA COMPATIBILITY DATA

Maximum Operating Temperature	275°F, 135°C
Maximum Surge Temperature	300°F, 149°C
Abrasion Resistance	Good
Alkali Resistance	Fair
Chemical Resistance***	Fair
Subject to Hydrolysis**	Yes

CONFIGURATIONS

Collector Models	Filtration Area		Length [†]		Flat Width	
	ft ²	m ²	in	mm	in	mm
Dalomatic® Cased: x/x/10	10.8	1.0	40	1016	19.5	495.3
Dalomatic Cased: x/x/15	16.1	1.5	59	1499	19.5	495.3
Dalomatic Insertable: 4/7 - 21/7	7.5	0.7	28	711	19.5	495.3
Dalomatic Insertable: 5/12 - 50/12	13.5	1.25	49	1225	19.5	495.3
Dalomatic Insertable: 6/10 - 30/10	10.8	1.0	40	1016	19.5	495.3
Dalomatic Insertable: 9/15 - 60/15	16.1	1.5	59	1499	19.5	495.3
Dalomatic Unit: DU 7, 14	7.5	0.7	28	711	19.5	495.3
Dalomatic Unit: DU 10, 20	10.8	1.0	40	1016	19.5	495.3
Dalomatic Unit: DU 30-D225	16.1	1.5	59	1499	19.5	495.3
MB Baghouse – MBT, MBW	12.8	1.2	96	2438	9.64	244.9
	16.0	1.5	120	3048	9.64	244.9
RF Baghouse	10.1	1.0	99	2515	7.26	184.4
	12.7	1.2	123	3124	7.26	184.4
	15.2	1.4	147	3734	7.26	184.4

BAG CLEANING AND DISPOSAL

For environmental compliance, it is highly recommended to consult federal, state and local environmental protection guidelines to determine the impact of washing or disposing of dirty bags. Many industry dusts are hazardous to our environment and are regulated by air quality standards and by national and local water standards during disposal.

[†] Rounded to the nearest inch (mm). ** Environmental conditions involving combinations of high temperature, corrosive material and moisture can reduce media strength. Reduction in media strength may compromise bag integrity and performance. *** A combination of chemicals may alter fiber resistance to the specified performance level. Chemical attack may compromise bag integrity and performance.

Significantly improve the performance of your collector with genuine Donaldson Torit replacement filters and parts.

Important Notice

Many factors beyond the control of Donaldson can affect the use and performance of Donaldson products in a particular application, including the conditions under which the product is used. Since these factors are uniquely within the user's knowledge and control, it is essential the user evaluate the products to determine whether the product is fit for the particular purpose and suitable for the user's application. All products, product specifications, availability and data are subject to change without notice, and may vary by region or country.



Craig Equipment Company

13055 MIDDLETOWN INDUSTRIAL BLVD, LOUISVILLE, KY 40223
 TF: 800-928-7100 • T: 502-245-4840 • F: 502-245-1665 craig-equip.com

