

DURA-LIFE™ – A BREAKTHROUGH FOR BAG USERS

Polyester bag media has historically been produced with a needling process that creates large pores where dust can embed into the fabric, inhibiting cleaning and reducing bag life. Dura-Life™ bag media is engineered with a unique hydroentanglement process that uses water to blend the fibers, resulting in:

- More uniform material with smaller pore size
- Better surface loading of dust that prevents penetration deep into the media
- Improved pulse cleaning and lower operating pressure drop
- Bags with longer life and greater value

GET CLEANER AIR

- Proprietary Dura-Life™ polyester filter media engineered with a unique hydroentanglement process provides the best combination of filtration efficiency, airflow, and durability

LONGER FILTER LIFE

- Two to three times longer bag life than conventional polyester when changing bags due to pressure drop
- Better surface loading of dust to prevent penetration deep into media



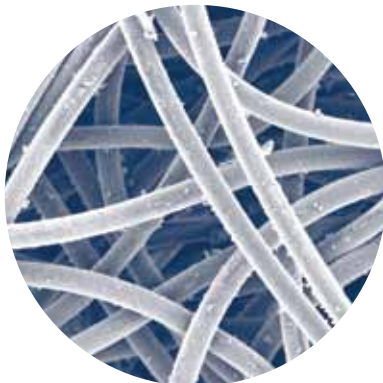
PREMIUM PERFORMANCE

- Heat-seam construction results in a seam with increased dependability and efficiency
- Available in a wide variety of top and bottom configurations and lengths
- Options include ground wires, abrasion cuffs and expansion rings.

APPLICATIONS

- General purpose applications including those requiring improved dust cake release

Available as replacement for many popular brands of baghouse collectors.



Dura-Life™ Bag–Clean Air Side (300x)



Polyester Bag–Clean Air Side (300x)

MEDIA SPECIFICATIONS

Bag Technology:	Proprietary hydroentangled polyester felt
Substrate:	Dura-Life™ polyester
Fabric Weight:	10.5 oz/yd ² (339.0-355.9 g/m ²)
Thickness	0.058-0.068 inches (1.5-1.7 mm)
Air Permeability (cfm @ 0.5 "wg)	35-40

MEDIA COMPATIBILITY DATA	
Maximum Operating Temperature	275°F, 135°C
Maximum Surge Temperature	300°F, 149°C
Abrasion Resistance	Good
Alkali Resistance	Fair
Chemical Resistance***	Fair
Subject to Hydrolysis**	Yes

CONFIGURATIONS

Collector Models	Filtration Area		Outer Diameter		Length*		Flat Width	
	ft ²	m ²	in	mm	in	mm	in	mm
Dalomatic® Cased – x/x/10	10.8	1.0			40	1016	19.5	495.3
Dalomatic Cased – x/x/15	16.1	1.5			59	1499	19.5	495.3
Dalomatic Insertable – 4/7 - 21/7	7.5	0.7			28	711	19.5	495.3
Dalomatic Insertable – 5/12 - 50/12	13.5	1.25			49	1245	19.5	495.3
Dalomatic Insertable – 6/10 - 30/10	10.8	1.0			40	1016	19.5	495.3
Dalomatic Insertable – 9/15 - 60/15	16.1	1.5			59	1499	19.5	495.3
Dalomatic Unit – DU 7, 14	7.5	0.7			28	711	19.5	495.3
Dalomatic Unit – DU 10, 20	10.8	1.0			40	1016	19.5	495.3
Dalomatic Unit – DU 30-D225	16.1	1.5			59	1499	19.5	495.3
HP Baghouse – HPH, HPT, HPW	10.2	1.0	3 x 6.6	76.2 x 167.64	99	2515	7.26	184.4
HPB Baghouse	7.1	0.7	4.5	114.30	73	1854	7.07	179.6
	9.4	0.9	4.5	114.30	97	2464	7.07	179.6
	11.8	1.1	4.5	114.30	121	3073	7.07	179.6
MB Baghouse – MBT, MBW	8.0	0.7	6.14	155.96	60	1524	9.64	244.9
	9.6	0.9	6.14	155.96	72	1829	9.64	244.9
	12.8	1.2	6.14	155.96	96	2348	9.64	244.9
	16.0	1.5	6.14	155.96	120	3048	9.64	244.9
	19.2	1.8	6.14	155.96	144	3658	9.64	244.9
PJ & PJD Baghouse – PJ, PJD	7.6	0.7	4.85	123.19	77	1956	7.62	193.6
	10.1	1.0	4.85	123.19	101	2565	7.62	193.6
	12.7	1.2	4.85	123.19	125	3175	7.62	193.6
	15.2	1.4	4.85	123.19	149	3785	7.62	193.6
RF Baghouse	7.6	0.7	3 x 6.6	76.2 x 167.64	75	1905	7.26	184.4
	10.1	1.0	3 x 6.6	76.2 x 167.64	99	2615	7.26	184.4
	12.7	1.2	3 x 6.6	76.2 x 167.64	123	3124	7.26	184.4
	15.2	1.4	3 x 6.6	76.2 x 167.64	147	3734	7.26	184.4
RJ Baghouse	7.2	0.7	14.8 x 3.4	375.9 x 86.4	30	762	16.87	428.5
	10.3	1.0	14.8 x 3.4	375.9 x 86.4	43	1092	16.87	428.5
	12.9	1.2	14.8 x 3.4	375.9 x 86.4	54	1372	16.87	428.5
	15.8	1.5	14.8 x 3.4	375.9 x 86.4	66	1676	16.87	428.5
	18.7	1.7	14.8 x 3.4	375.9 x 86.4	78	1981	16.87	428.5
	21.6	2.0	14.8 x 3.4	375.9 x 86.4	90	2286	16.87	428.5
	24.4	2.3	14.8 x 3.4	375.9 x 86.4	102	2591	16.87	428.5
	30.2	2.8	14.8 x 3.4	375.9 x 86.4	126	3200	16.87	428.5
	35.9	3.3	14.8 x 3.4	375.9 x 86.4	150	3810	16.87	428.5

BAG CLEANING AND DISPOSAL

For environmental compliance, it is highly recommended to consult federal, state and local environmental protection guidelines to determine the impact of washing or disposing of dirty bags. Many industry dusts are hazardous to our environment and are regulated by air quality standards and by national and local water standards during disposal.

* Rounded to the nearest inch (mm)

** Environmental conditions involving combinations of high temperature, corrosive material and moisture can reduce media strength. Reduction in media strength may compromise bag integrity and performance.

*** A combination of chemicals may alter fiber resistance to the specified performance level. Chemical attack may compromise bag integrity and performance.

Craig Equipment Company

13055 MIDDLETOWN INDUSTRIAL BLVD, LOUISVILLE, KY 40223
 TF:800-928-7100 • T:502-245-4840 • F:502-245-1665 craig-equip.com

