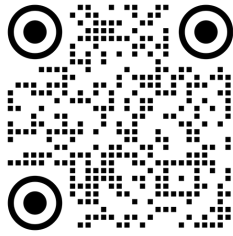




Clamp-Together Duct



# CLAMP-TOGETHER DUCT

## ROLLED LIP

*The Quick-Connect, Quick-Assembly,  
No-Weld Ductwork*

### Specifications

- Comes in Glv, 304SS, or 316SS
- Pipe comes in 5ft. Lengths
- Sleeves come in 11" Lengths (or 9" for heavy)
- Gaskets and O-rings are available in Silicone, EPDM, & Viton
- The rolled lip is made by pressing the ends of pipe in a die custom sized for each diameter
- 11" adjustability w/ sleeve
- 2" adjustability in STANDARD fittings requires extra o-ring)
- Cut end of pipe points away from air stream

### Construction & Finish

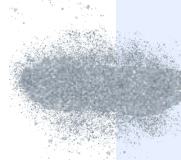
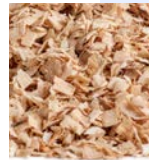
- Assembly: adjustable clamp-together
- Standard Color: galvanized material also offered in other material and coatings
- Custom Branding: White labeling available upon request



**EASY CLAMPING SYSTEM +  
ADJUSTABILITY IN THE FIELD**

### Applications

#### 22-18 GA



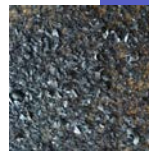
- Wood/sawdust
- Ambient air
- Light particles
- Paper trim
- Weld fume
- Exhaust (w/silicone gaskets)
- Up to 24"

#### 16-14 GA



- Wood chips
- Plastic chips
- Paper trim elbows larger than 6"

#### 12-10 GA



- Wood & metal chunks
- Pellets

© Craig Equipment Company

13055 MIDDLETOWN INDUSTRIAL BLVD, LOUISVILLE, KY 40223  
TF:800-928-7100 • T:502-245-4840 • F:502-245-1665 [craig-equip.com](http://craig-equip.com)

